

Auxilium

GenS

Analyzer

R4

Pennant Systems Support IPS Suite

Maximizing operational efficiency

Pennant's System Support software - Auxilium suite, is a complete solution for organisations aiming to optimise the support, maintenance, and overall lifecycle management of complex systems and assets. Its features are designed to **improve operational efficiency, reduce costs, ensure compliance, and enhance asset readiness**, and are particularly valuable in industries like defence, aerospace, and safety critical industries, where efficient logistics support is **critical to success**.

Why you need System Support:

Entire Lifecycle Management - From product design and development to operation, maintenance, decommissioning, and training, Auxilium provides a comprehensive solution for managing a product's entire lifecycle. The end-to-end solutions **improves asset availability, reduces downtime, and enhances asset availability**.

Enhanced Maintenance Planning and Management - Optimise maintenance schedules and tasks, ensuring that maintenance is performed pro-actively rather than reactively, helping to **reduce unexpected breakdowns and extend the lifespan of your assets**.

Intelligent Data-Driven Decision - With robust data analytics and reporting capabilities, offering insights into asset performance, maintenance history and cost management, facilitates a data-driven decision making approach that will allow you to make informed decisions to **optimise your support strategies and allocate resources effectively**.

Standards and Regulatory Adherence - Comply with industry regulations and standards. From managing documentation, tracking compliance status to ensure that all maintenance and support activities are conducted correctly, **reducing the risk of non-compliance penalties**.

Maximize operational and cost efficiency - By streamlining maintenance processes and improving overall operational efficiency, you can **reduce costs** associated with asset management, including **minimising downtime, reducing spare parts inventory costs and optimising resource allocation**.

Scalability and Flexibility - Whether a company manages a small fleet of vehicles or a vast inventory of complex aircraft, the software can be adapted to support **YOUR** requirements.

Improved Collaboration and Communication - **Improved communication and collaboration** across different teams, such as maintenance crews, supply chain managers, and compliance officers. Leading to **more coordinated efforts, reducing errors and improving the efficiency of support activities**.

Risk Management and Mitigation - Identify potential risks in your support and maintenance operations and develop strategies to mitigate them, **minimising the impact of unexpected failures** and ensures the **continuous availability of critical assets**.

Support for Multiple Integrated Product Support (IPS) Elements - Supporting various IPS elements, such as, **Maintenance Planning, Supply Support, Technical Data and Support Equipment**, as well as a vast amount of the capability being aligned to the global S-Series standards.

The Pennant IPS Software Suite supports the following standards:

DATA SPECIFICATIONS	STANDARDS			
DoD requirements for a logistic support analysis record	MIL-STD-1388-2	✓		
ADO logistic support analysis record requirements for the Australian Defense Organisation	DEF(AUST) 5692	✓		
SAE Logistics Product Data	GEIA-STD-0007	✓		
SAE Level of Repair Analysis (LORA)	AS1390		✓	
ASD/AIA International specification for the preparation of technical documentation in a controlled language	ASD/AIA-STE100			✓
ASD/AIA International specification for technical publications using a common source database	S1000D			✓
ATA - Air Transport Association - standardise documentation and data formats for aircraft maintenance and operations				✓
AESPs – Army Equipment Support Publications – user/operator, maintenance, repair, installation and cataloguing information				✓

Data specifications in our planned roadmap:

DATA SPECIFICATIONS	STANDARDS				Possible with partner integration
MoD Integrated Logistics Support	DEF STAN 00-60	✓			
ASD/AIA International specification for Material Management	S2000M				✓
ASD/AIA International specification for logistics support analysis	S3000L	✓			
ASD/AIA International specification for training analysis and design	S6000T				✓
ASD/AIA International specification for developing and continuously improving preventive maintenance	S4000P	✓			
ASD/AIA International specification for in-service data feedback	S5000F		✓		



GenS

GenS is a powerful tool for managing complex logistics information across the lifecycle of equipment and systems.

This market-leading tool is designed to power iterative supportability and logistics analysis, stakeholder **collaboration**, **data-driven decisions**, and **organised management for unbeatable product support**.

Key functionality and benefits of GenS and it's Logistics Product Database (LPD):

- Conversion of Logistics support analysis information between LPD standards
- The ability to tailor standard data into project specific requirements. How?
By entering LPD information using the tailored screens to focus on project specific elements
- Multi-lingual support for data entry imports
- Important a range of data formats (LPD formats, Microsoft Excel, XML and more)
- Standards agnostic – utilise the ability to import and output to a range of global standards
- Organise teams and data by project to maximise coordination
- Arrange your desired GenS screen layout by dragging and drop elements and save the layout for future use
- Validate project data, jump to errors, and export the error list report to Excel
- Project managers have the ability to create tailored configurations of managed elements for their end users with the ability to support to Microsoft Excel or other local files to import into GenS
- Reuse configurations between projects and share the configurations with third parties to allow for an integrated supply chain
- Create data tailoring, custom views, custom workflows, user groups and projects
- Create visual Reliability Centered Maintenance (RCM) logic trees and conduct RCM through guided analysis steps
- Quickly and accurately manage and compare product variants by model and Serial Number
- Standardise common descriptions for tasks and subtasks in a centrally managed library



Instant Startup

Install Microsoft SQL database and install GenS, login and you are ready to work within 30 minutes.



Ease of navigation

Finding where your data is stored / input is as easy as navigating to the required table for the standard.



Reduce errors and save time with modifiable GUI

Setup your GenS screens how YOU like it! Multiple monitors, move windows around for easy cross-referencing and ease of workflow!



Excel compatibility

Table data can be exported and imported (drag and drop) to allow for existing data to be quickly and correctly imported into GenS – save months!



Save even more time

With batching capability for import / export and report generation.



Data validation of imported data

GenS imports data and gives the user the ability to validate and correct the data prior to saving in the database, along with incrementally completing data later – save weeks!



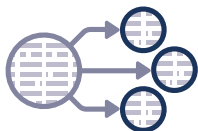
Complete all associated data with Visible (Guided) Data referencing

On display standards-based help and guidance that is user configurable.



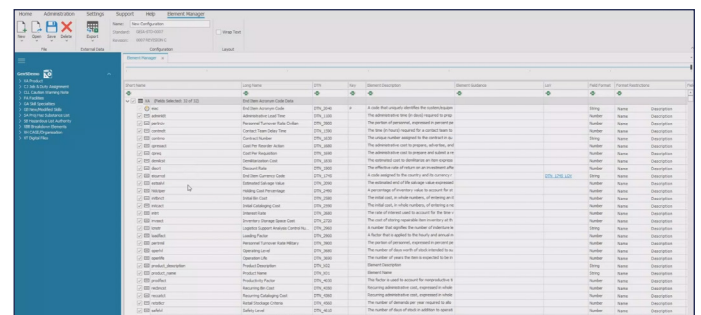
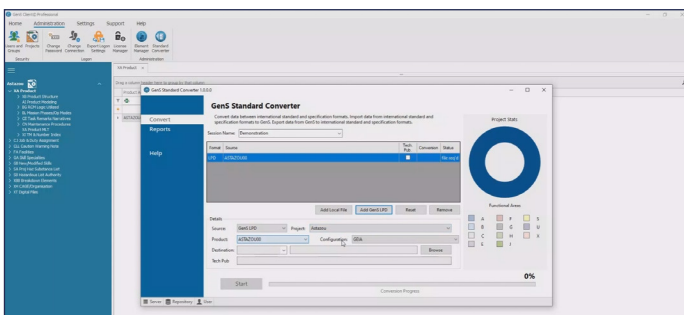
Digital files

The ability to embed and preview images and documents directly in the LPD.



Configurable / Templated Projects

Simplify complex data entry, through easy real time data entry and validation, including tailored to your project's specific needs – save 50% data entry time.





Analyzer

Analyzer is a comprehensive tool that supports the efficient planning, management, and optimization of logistics support activities for complex systems.

Its features, such as LCC (Life Cycle Cost), LORA (Level of Repair Analysis), Sparing Analysis and Cost Risk, enable organisations to enhance system reliability, reduce downtime, and minimise life cycle costs. By integrating various aspects of logistics engineering and supporting industry standards, Analyzer plays a crucial role in ensuring the readiness and sustainability of critical assets.

It is a key tool for managers, decision-makers, engineers, ILS teams and other staff involved in system design, system acquisition, proposal writing, support solution optimisation, in-service support management and through-life support.

Key functionality and benefits of Analyzer:

- Maximize operational efficiency with detailed supportability analysis.
- Integrated support solution development through definition, analysis and documentation.
- Shared data for equipment configurations and supportability engineering – enter once, use everywhere!
- Supportability engineering modelling and simulation tool for complex products and multi-indenture logistics organisations.
- Assists analysis by using standard international data transfer formats to share data.
- Identify product sustainment strategies through options analysis.
- Improve awareness of data quality and variance through sensitivity and risk analyses.
- Find major cost drivers with life cycle cost estimation and analysis.
- Conduct through-life performance assessments of operational supportability solutions.
- Effectively support operational readiness management
- Generate availability simulations of product support solutions.
- Multi-mission generator for availability simulations.
- Dashboards for intuitive management, evaluation and decision-making.
- Scientist-developed algorithms for LCC (Life Cycle Cost), LORA (Level of Repair Analysis), Sparing Analysis, Scenario based modelling – designed by experts, for experts!
- Intuitive analysis with a user-friendly interface.

Analyzer delivers value and provides analysis to support informed decisions



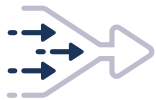
Easily determine the best repair policy for spares

Cost estimation and prediction supports decisions based on Life Cycle Costs. Analyzer delivers value and provides analytical and decision support at all points of a product's life-cycle.



Enhanced GUI to ensure consistency of system definitions

Analyzer's use of a central database and data management simplifies data entry and ensures consistency of system definitions.



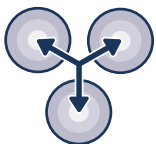
Simplify the process

Analyzer simplifies the analysis process and interfaces with current data transfer standards.



Improve data driven decisions

It enables "what-if" analysis to compare the impacts of support options (or actual data feedback) and thus informs data-driven decisions to optimise product support solutions across the life cycle.



Intuitive availability assessment model

Allocate Availability system targets to Prime Equipment and systems. Determine realistic availability targets to be required from system designs. Assess the Availability achievable from proposed system designs at key design review milestones (e.g. PDR, CDR).



Be operationally ready

Supports operational readiness at an affordable life cycle cost and generates availability simulations of product support solutions.



Complete all associated data with Visible (Guided) Data referencing

On display standards-based help and guidance that is user configurable.



"Measure of effectiveness"

Analyzer has five measures of effectiveness that can be applied: Expected System Delay Time; Expected Number of System Backorders; Operational Availability; Intermittent Availability; Probability of Mission Accomplishment.



R4i

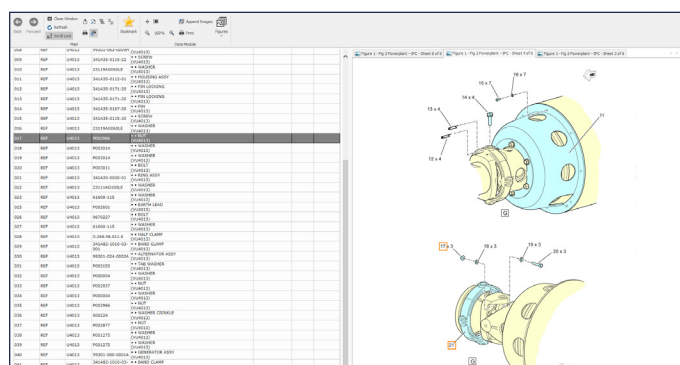
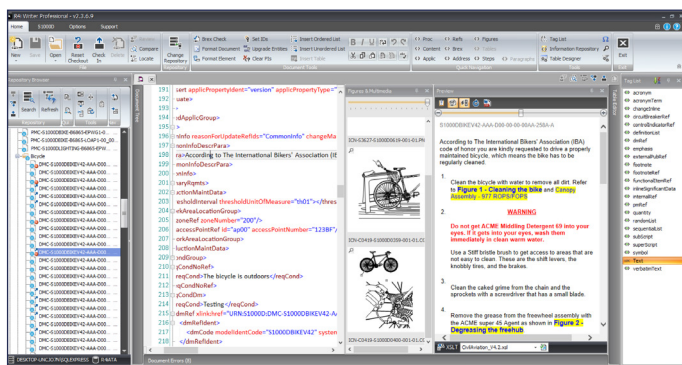
R4i is designed for managing and delivering technical publications, content creation, and management and processing tools.

The R4i suite includes tools like Writer, Binder and Media Gen, which are primarily used in industries such as aerospace, defense, and transportation for creating, managing, and distributing technical documentation and publications.

Its robust compliance with industry standards, centralised data management, enhanced collaboration tools, rapid publishing capabilities, and advanced security features should make it your tool of choice.

Key functionality and benefits of R4i:

- The R4i suite supports and complies with various industry standards so technical documentation is consistent, compatible, and ready for integration into systems used.
- Rapid and accurate publishing of technical documents in multiple formats, such as PDF, XML, HTML, and IETP (Interactive Electronic Technical Publication).
- Provides the option to streamline content creation, management, and delivery processes, to reduce the time and resources needed to produce documentation.
- Ability to customize the R4i Viewer screen to tailor content for users, such as maintenance crews and engineers.
- The tools modular approach facilitates content reuse, reducing the time and effort needed to create, update, and manage technical documentation.
- R4i solutions can be deployed on-premises or in the cloud, providing flexibility based on an organisation's IT infrastructure and security requirements.
- Advanced search and navigation capabilities, allowing users to quickly find relevant information within large sets of technical documents. Features like keyword searches, filters, and cross-referencing improve efficiency and reduce time spent looking for information.



R4i helps you create, manage and leverage information



Free Viewer

The R4i Viewer is royalty FREE to distribute with IETM's generated from the R4i CSDB.



Assigning tasks

Managers can assign users with work and associated files to improve and streamline process.



Global Search and Replace

Have the ability to replace text globally within Data Modules. This does not affect elements, only text within the element.



Online or Offline IETM

Whether you are in the office or out in the field you can access your IETM's online or offline.



Save time

With Media Generator's templates feature you have the ability to store all of the IETP's structure and configuration settings for re-use later. Whereas our Writer tool has the ability to easily switch stylesheets while previewing the current document.



Save money

R4i Binder can publish both SGML and XML content to PDF, based on any DTD or Schema specification. So you can save money with one tool for publishing legacy data into ATA or S1000D.



Audit Compliance

R4i Binder's Book History feature retains a copy of every book PDF and Change Package (with Change Package module licensed) that has been published and released in the library, including official "release date".



Safe and secure

Our Reviewer tool provides the ability for a user to provide feedback directly to the publication distributors.



Illustrated Parts Data Manager

Automates the process of parts data creation, speeding time to market and eliminating human error from the parts data production cycle. Designed to connect to disparate information systems, Microsoft Excel spreadsheets and SQL Databases, the R4i IPD Manager allows authors to simply map the data fields to their required export data sets.

Services

A solution support by our technical services, to optimise your experience, reducing complexity and increase efficiency.

Pennant's dedicated global service department delivers highly professional, reliable and cost-effective services for our customers.

Installation support - Our dedicated team provides comprehensive installation support to ensure a smooth and efficient setup of our software, minimising downtime and maximising productivity.

Product training - Our specialist trainers deliver courses tailor made to you and your staff to bring you up to speed on how to use our software tools, giving you the confidence to maximize your operational efficiency.

IPS training - We offer in-depth IPS training sessions designed to equip your team with the necessary skills and knowledge to effectively manage and utilise integrated product support systems.

Data migration - Our experts handle data migration with precision and care, ensuring a seamless transition of your data to our systems without any loss or disruption.

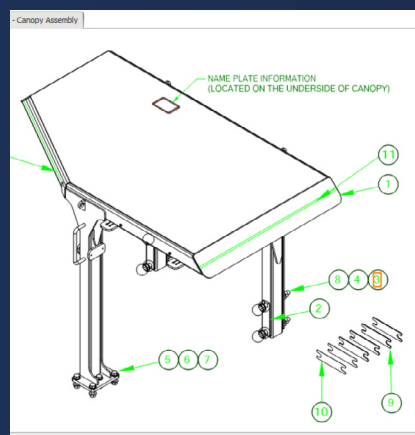
Stylesheet development - Pennant has off-the-shelf XSLT and XSL-FO packs for many different S1000D versions and industry deliverables. Our team are also able to customize stylesheets for customers unique needs.

Business rules development - The Pennant Consulting Team can assist customers to develop their Business Rules documents, including BREX for project delivery.

Data module conversion (DMX) - We specialise in converting data modules (DMX) to meet your specific requirements, ensuring compatibility and consistency across your documentation.

Technical publication development - The global Pennant team of authors, illustrators and consultants have the ability to manage, develop, and deliver complex source data into a variety of technical manuals such as Operation and Maintenance Manuals, Parts Catalogues and training courseware utilising the robust Pennant's software, for delivery in print or interactive electronic technical manual (IETM).

Consultancy - IPS/ILS Consultancy, Program Design, Project Planning, Policy and Guidance, Product Support Engineering and Analysis, Product Support Data Services, Product Support Data Integration and Management, Product Support Effectiveness Reviews, Product Life Cycle Costing and Planning.



Future plans for the Auxilium suite:

Improved Supply Chain Management - Pennant's Auxilium IPS software will integrate with supply chain management systems to ensure the timely availability of parts and resources needed for maintenance and repair activities. It helps manage inventory levels, streamline procurement processes, and reduce costs associated with spare parts and logistics.

Integration with Existing Systems - The software is designed to integrate seamlessly with existing enterprise systems, such as ERP (Enterprise Resource Planning), PLM (Product Lifecycle Management), and MRO (Maintenance, Repair, and Overhaul) systems. This integration helps to create a unified and synchronised environment for managing product support.

Enhanced Training and Documentation Management - Pennant's software includes modules for managing technical documentation, training materials, and e-learning content, which are critical for ensuring that personnel are adequately trained to perform maintenance tasks. This feature enhances knowledge management and ensures that training materials are up-to-date and accessible.

Enhanced Customer Support - For organisations that provide customer support and maintenance services as part of their business model, the software enables more efficient management of service contracts, customer interactions, and service-level agreements (SLAs).

Contact:

E-mail us at: sales@pennantplc.com

Visit us at: www.pennantplc.com



